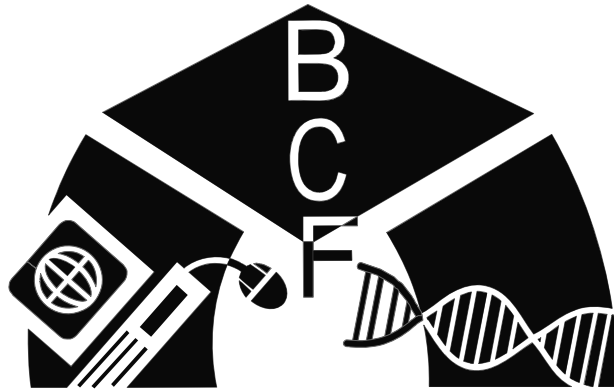


THE UNIVERSITY OF
ARIZONA[®]
TUCSON ARIZONA



Biotechnology Computing Facility

Introduction to BioDesk

Getting Started File Manager

For assistance please contact:

<http://bcf.arl.arizona.edu/>

Susan Miller – 626-2597 sjmiller@email.arizona.edu

Al Agellon – 626.1672 – agellon@email.arizona.edu



What is BioDesk?

BioDesk is a unified desktop of customized genomic applications and online resources.

BioDesk does not require special installation or additional files. The BioDesk viewer is a small executable file; just download the viewer from our web site and start using it right away.

BioDesk can be run from any platform: Macintosh, PC or Unix machines. The interface, look and feel is identical regardless of the operating system or platform.

With BioDesk you can continue to work uninterrupted: If your machine crashes, you can reestablish connection to your BioDesk session running on amadeus and pick up where you left. If you need to work from a different machine, just close your session and reestablish your connection from the new machine; there is no need to save what you are doing on amadeus first.

Easy to provide technical support: If you need assistance you can share/view a BioDesk session, we can guide you through the process click by click and interact with your session. No more confusing instructions over the telephone; with BioDesk tech support is truly interactive.

Applications available on BioDesk include:

- **GCG/SeqLab**
- **FAKtory**
- **ClustalX**
- **SeaView**
- **PhyloWin**
- **NJ-Plot**
- **Staden Package**

Overview

In this tutorial you will learn how to:

- ❖ Apply for a BioDesk account
- ❖ Start a BioDesk Session
- ❖ View a BioDesk Session
- ❖ Understand the BioDesk Anatomy
- ❖ Launch programs
- ❖ Use your mouse in BioDesk
- ❖ Use File Manager & Clipboard

Preparations

This is the first in a series of related tutorials. Please complete this tutorial before moving on to GCG/SeqLab.

What you need

- To access BioDesk, you will need an account.
Use the online form at:

<http://bcf.arl.arizona.edu/online-tools/new-account-form.html>

You will then be sent a login and password to access the BioDesk server.

- You will need a BioDesk Viewer

The BioDesk Viewer (for Mac & PC) is available at:

<http://bcf.arl.arizona.edu/biodesk/download-biodesk-viewer-client.html>

Getting Started

Starting a Session



1. Open a web browser and enter the following address:

<http://bcf.arl.arizona.edu/>

2. Click on the 'BioDesk Session Mgr' link under the 'Online Tools' heading.

3. Provide your amadeus login and password:

BioDesk Session Manager

Amadeus Login:

Amadeus Password:

[Help](#)

[To modify your BioDesk settings, click here.](#)

3. Click on Submit.

If this is the first time you have run BioDesk, you will automatically be taken to the BioDesk settings page:

This information will be used to contact you should a problem arise with your session and/or if it has run idle for too long:

If your session is idle more than 72 hours, it will automatically be terminated! A notification will be emailed to you.

Amadeus Login:

Amadeus Password:

New BioDesk Password:


Re-type Password:

Email:

Phone [XXX-XXXX]:

[Help](#)

4. Complete* the form and click on Submit.

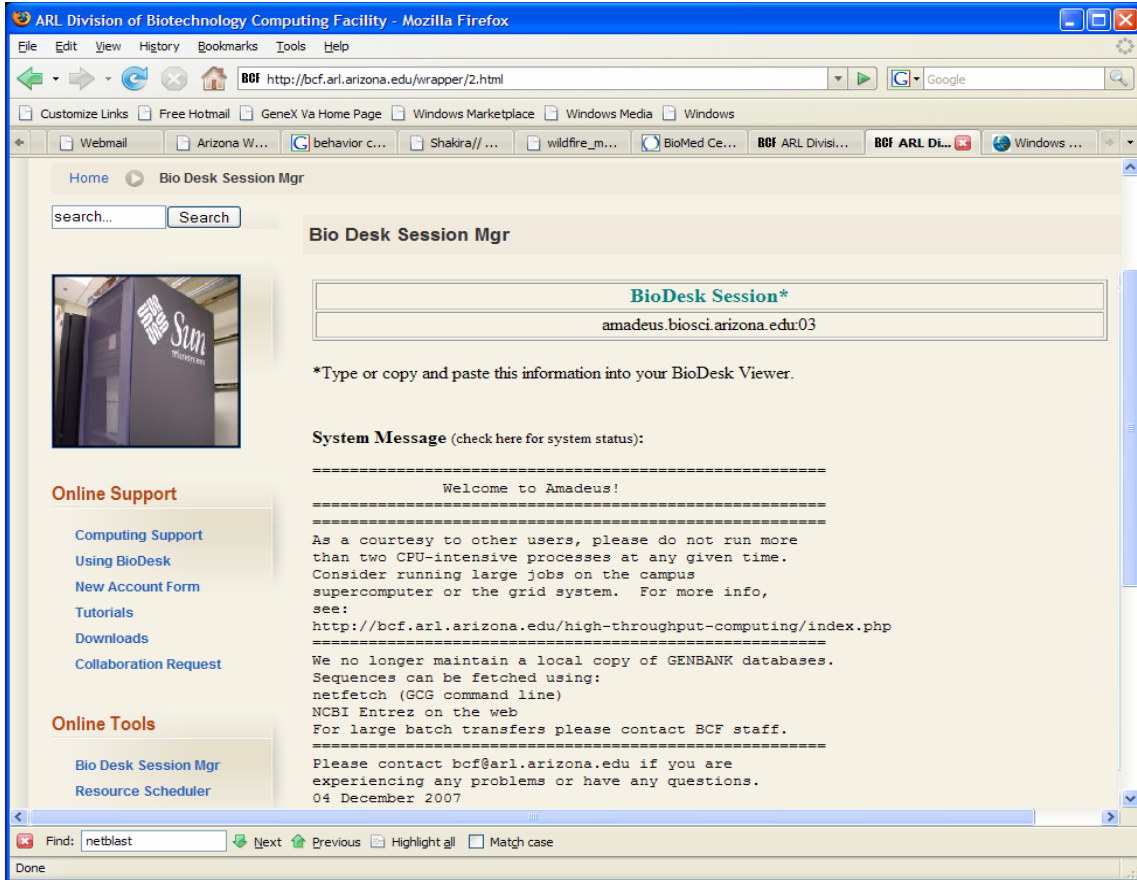


*BioDesk sessions require a separate password. While this can be the same as your Amadeus password, we recommend something less critical that you can share with the BCF staff to view your session for support questions.



5. Follow the link to return to the login page.
6. Enter your login, password and click on Submit.

The BioDesk Session page will appear after a short pause.



The address for your session is displayed in the BioDesk Session box.
(e.g. amadeus.biosci.arizona.edu:03)

The **System Message** area will have important updates on the system status.

7. Copy the session address with your mouse.

Click-drag and select 'copy' from either the pulldown edit menu or the right-click popup menu (Windows).

You may have only one session active at a time. The Session Manager will either display your current session address or start a new one.

For more information on the other menu options for the BioDesk Session Manager, please see 'Using Biodesk' our web site:
<http://bcf.arl.arizona.edu/>



Viewing your Session

If you have not yet retrieved a copy of the BioDesk viewer, do so now:
<http://bcf.arl.arizona.edu/biodesk/download-biodesk-viewer-client.html>

You can place it on your desktop; there is no installation required.



1. Double-click on the BioDesk Viewer icon.

The 'Connection details' dialog box will appear.



2. Paste in the address of your session, then click on 'OK'.

3. Enter your BioDesk password when prompted.

You will get a blank window with a small message asking you to 'Please wait...screen is loading'. Then BioDesk will appear.



When the BioDesk screen appears, you will see only the Taskbar. Left-Clicking anywhere on the grey area of the desktop will pop up the BioDesk menu.

BioDesk Anatomy

Window Manager (Taskbar)

BioDesk has four 'virtual' desktops. Applications can be running in each of them, moved between them, and even expanded to occupy more than one.

Navigating between these desktops and tracking open windows are the main functions of the Taskbar.

The Window Manager, also called the Button-Bar, is actually a combination of modules; WinList (a list of open windows), Pager, and some function buttons: a clock, system load meter, an 'Exit' button that will kill your BioDesk session (as opposed to closing your viewer), and a 'HELP' button.



The **WinList** is used for managing your currently open windows. Any window that is open is represented here with a button and can be minimized or restored by clicking on it. The window that is currently active (in the foreground, accepting input) will have a red button.

The center of the Button-Bar is the **Pager**; it displays a miniature version of the four desktops and is used to navigate between them and the windows within them.

In the example above only the upper-left square (Desktop) is occupied, you can also see small rectangles that represent the windows that are open in that desktop.

As your mouse hovers over each rectangle, a balloon will appear telling you what window you are pointing to; clicking on the mini-window will take you to that application.


Clicking on the other squares will take you to that virtual desktop, where you can open additional applications.

On the right side of the Button-Bar is:

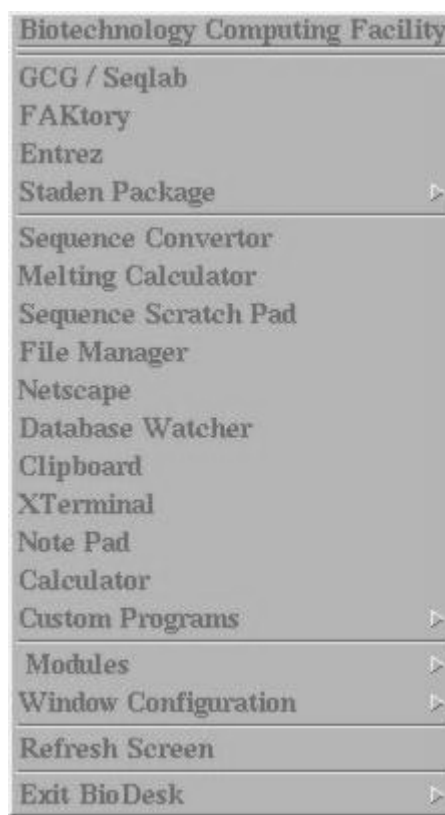
- a Clock
- a Load Meter (the more black, the more load is on the server)
- an 'EXIT' button
- and a 'HELP' button

Clicking on the 'EXIT' button will kill your BioDesk session and you will have to telnet in and run the 'biodesk' script again to restart it.

Clicking on the 'HELP' button will launch Netscape and take you to the BioDesk Home page.

To close your BioDesk window without ending the session (everything will remain as you left it), click on the VNC icon  in the upper-left corner to pull-down the controls menu and select 'Close'.

BioDesk Menu



We have collected a number of related applications together and put them into a single menu, available by left-clicking anywhere on your BioDesk desktop.

Many of these entries have tutorials of their own. For more information on these applications, see our web site:

<http://bcf.arl.arizona.edu/application-tutorials.html>

Using your Mouse

BioDesk allows the user to copy & paste text between applications within the BioDesk environment as well as between other applications on your machine.



Most Xwindows software is written with 3 button mice in mind, but most PCs only have 2 button mice, and Macs normally have one.

Therefore, some mechanism is needed to transmit right, left and middle button combinations.

Mouse button events are assigned by default as follows:

PCs with 3-button mice:

Left (button 1) = Copy
Middle (button 3) = Paste
Right (button 2) = Block text from last cursor position

PCs with 2-button mice:

Left (button 1) = Copy
Right (button 2) = Block text from last cursor position

Macs must use 'Command+n' to get all button events:

Command + 1 = Toggle use of button 1 (Copy)
Command + 2 = Toggle use of button 2 (Block)
Command + 3 = Toggle use of button 3 (Paste)
Command + 4 = Send single button 2 click (Paste)
Command + 5 = Send single button 3 click (Block)

The current status of the button toggles is shown on the title bar of each connection.



There are options within the BioDesk viewer settings that allow you to reassign/swap mouse button functions and to emulate a 3-button mouse by allowing 'chording' (pressing more than one button at a time).

For more detailed information on how this is done, please see the 'Copy & Paste' page of the BioDesk instructions online at:

<http://bcf.arl.arizona.edu/biodesk/biodesk-copying-pasting-2.html>

File Manager

We offer additional training for GCG/SeqLab, FAKtory, Entrez and any other application available at the BCF. However, with this tutorial we'd like to familiarize you with a common tool.

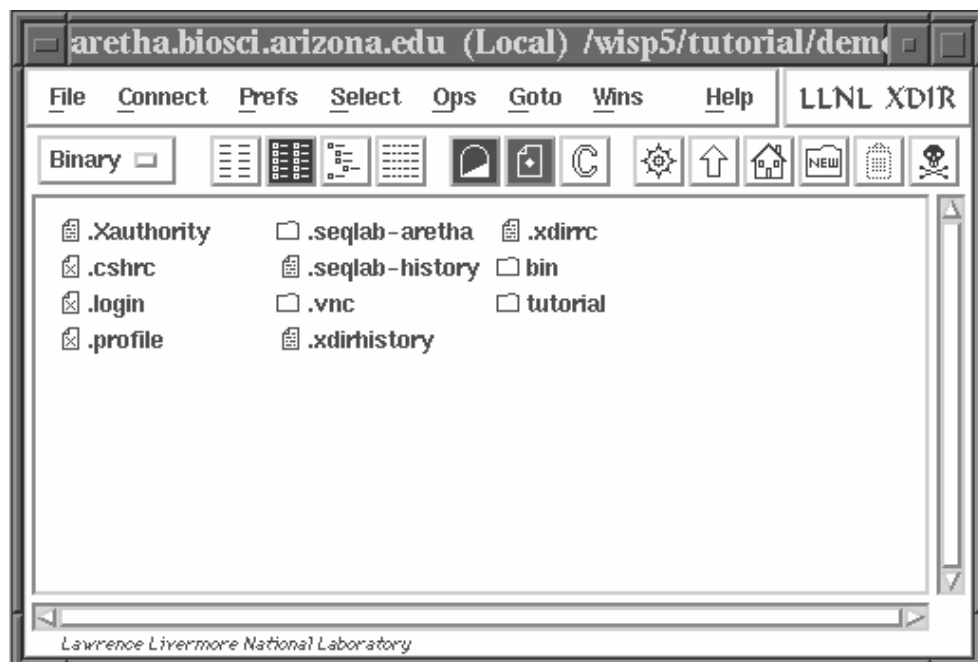
File management has, for many, always been one of the most difficult aspects of working in a UNIX environment. Especially for GCG/SeqLab users since GCG can generate large quantities of mysteriously labeled files.

For this reason we have provided BioDesk users with a simple graphical interface to their user folder.



1. Click on the desktop to call the BioDesk menu.
2. Click on 'File Manager'.

A small splash screen will appear for a moment, then the File Manager window will appear (contents may differ from example).



FileManager allows you to do most everything one could do with Finder (Macs) or Windows Explorer (PCs), plus it has built-in FTP abilities.

Files may be moved, copied, and/or grouped by mouse dragging. Files also may be 'dragged' into folders or between File Manager windows.

Icons

The following icons provide quick access to File Managers features.



To **delete** files, select them and click on the trashcan.
(equal to 'rm' in UNIX).



To **create new folders** click on the 'NEW' button.
(equal to 'mkdir' in UNIX)



To return to your **Home directory** click on the house button.
(equal to 'cd' in UNIX)



To **move** up to the parent directory click on the up-arrow.
(equal to 'cd ..' in UNIX)



To **refresh** the directory contents, click on the starburst.



To change the **layout** mode (the style the files are displayed in),
select one of these buttons.



To open **additional windows** when you click on a folder, toggle the
'Tunneling Mode' button.



To **hide system files** (e.g. .cshrc), click on the 'dot mode' button.



To **exit** the FileManager, click on the Skull & Crossbones.

The online Help available with FileManager is quite good and easily
accessible from the menu bar.

3. Click on 'File' from the menu bar and select 'Quit' to close File Manager.

Finishing Up

To close your session without killing it (i.e. to exit the viewer):

Select 'Close' from the VNC  menu.

To kill your session:

Click on the 'EXIT' button on the Taskbar, then click on 'Yes' to confirm.

You will need to telnet in and run the 'biodesk' script again to create a new session.

Summary



In this tutorial you learned how to:

- ❖ Apply for a BioDesk account
- ❖ Start a BioDesk Session
- ❖ View a BioDesk Session
- ❖ Understand the BioDesk Anatomy
- ❖ Launch programs
- ❖ Use File Manager

